

Holden / Chverolet MyLink Integrated
Apple CarPlay / Android Auto

PRODUCT LIST



Interface 1 EA



Main Power Cable



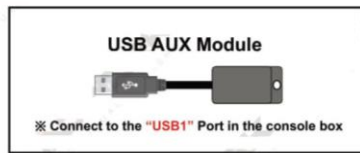
Power Cable 1 EA



OSD Board 1 EA



HDMI Cable



※ Connect sound using "OBD-AUX" or "USB-AUX"

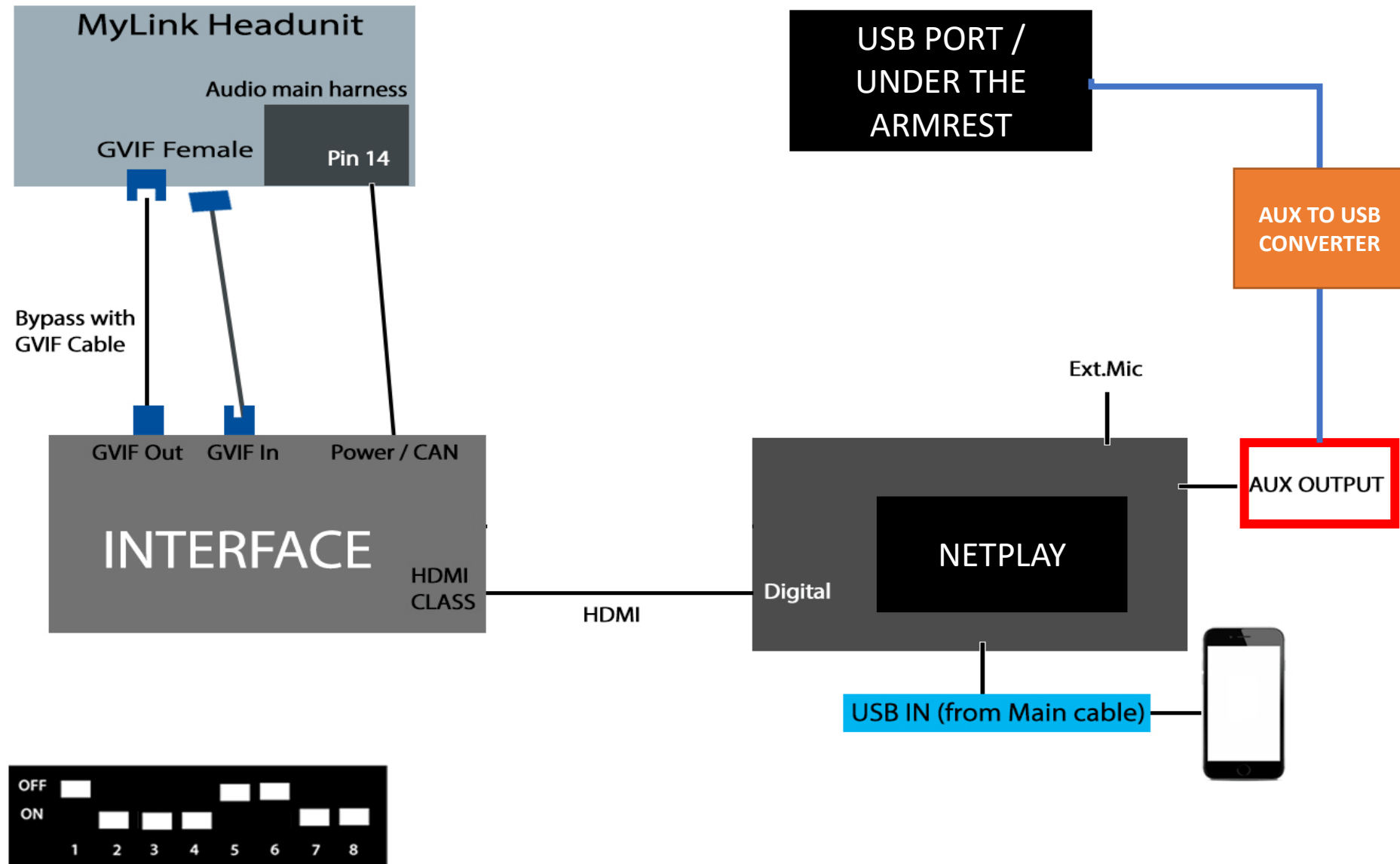


External Mic



LVDS Cable 1 EA

HOW TO CONNECT THE WIRING





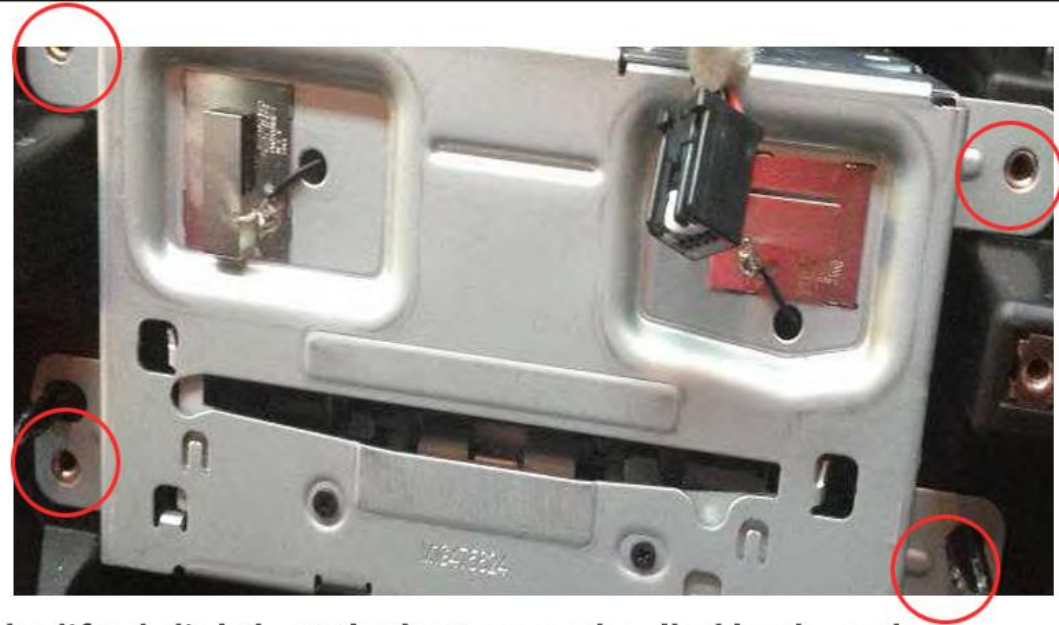
1. Remove left and right dash console covers.



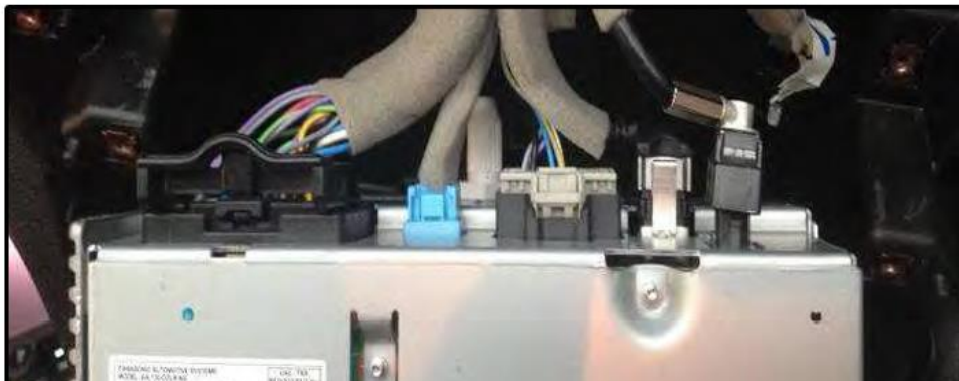


3. Grasp front fascia in the following position, and pull out. Then disconnect those 3 connections at the back of it. Handle with care to prevent any sort of scratch or damage.





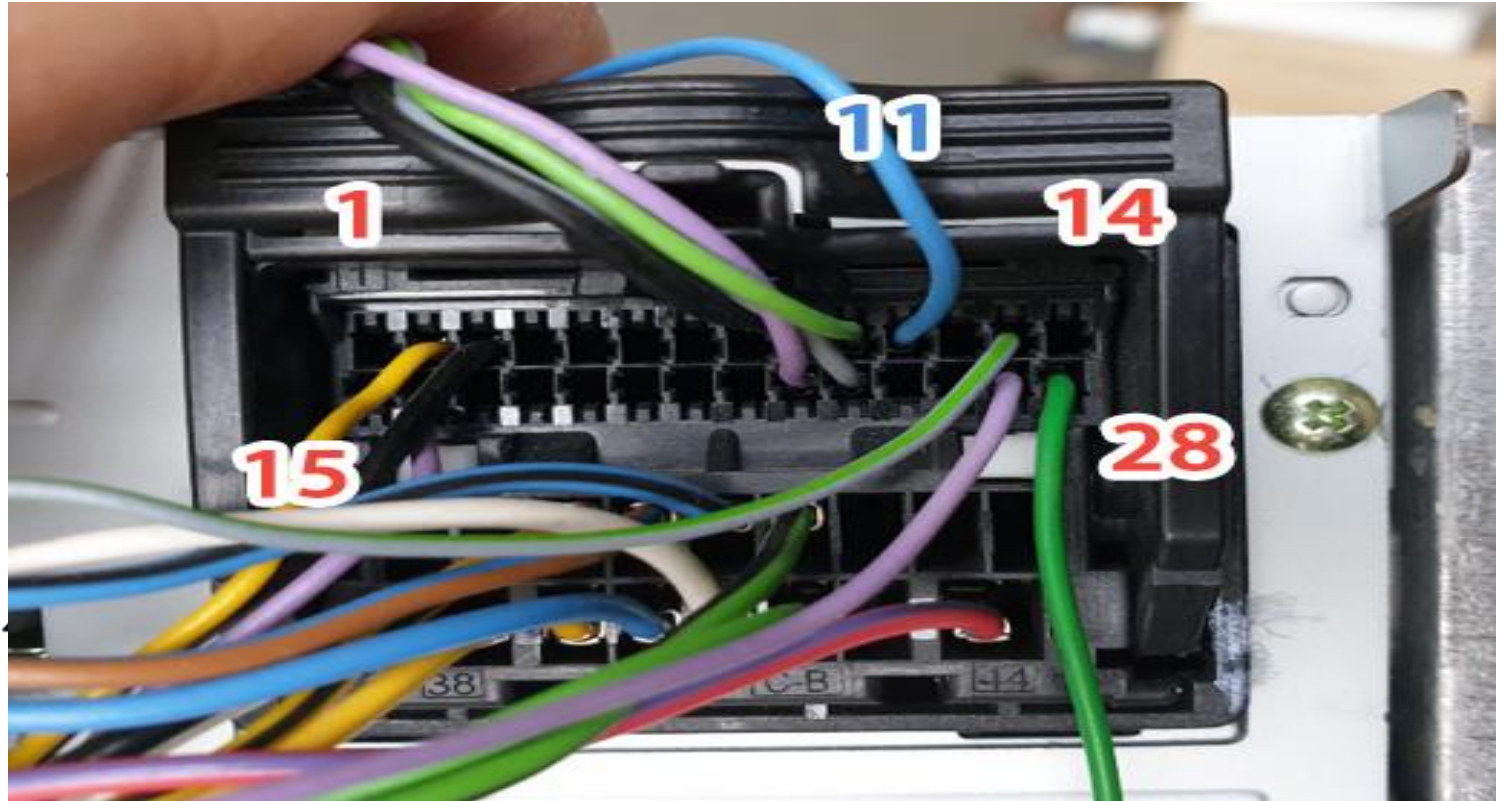
5. Remove both left & right console wings. These can be lifted slightly at the bottom and pulled backwards. Once it's gone, remove those 4 bolts holding the main headunit.



CAN WIRING

CAN LOW - **YELLOW** -> (PIN # 2)
CAN HIGH - **PURPLE** -> (PIN #16)
SWC – **GREEN** -> (PIN #14 OR #28)

2	YE	Integrated Center Stack Serial Data Low	Yellow wire
16	VT	Center Integrated Center Stack Serial Data High	PURPLE WIRE
28	GN	Low Speed GMLAN Serial Data	swc wire

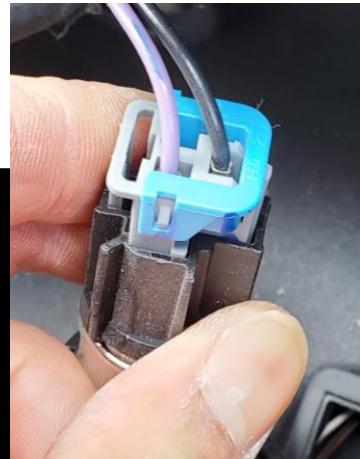


POWER WIRING

- TAP RED AND GDN WIRE FROM BEHIND CIGARETT LIGHT PLUG



PURPLE WIRE – ACC
BLACK WIRE - GROUND



Mode Change



Return OEM display



mode change (2 seconds)



Back to OEM display for 2 seconds and back to CarPlay

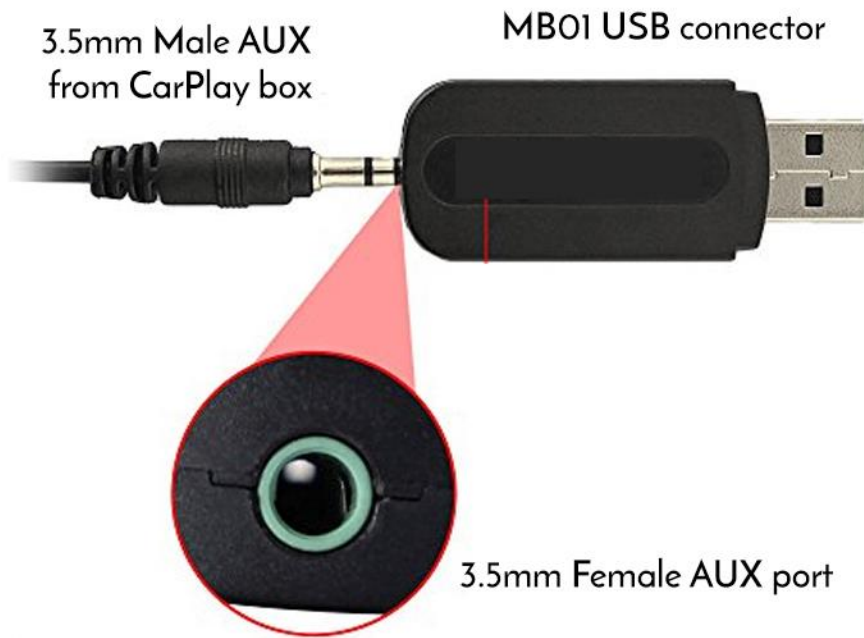
steering wheel button



Scroll Up or down button will change music tracks as next and previous tracks



CarPlay to Audio- Sound connection



This USB Dongle will let CarPlay box to play sound via Media - USB connection.



ONLY IF YOU CAN'T SELECT IPOD MODE FROM MEDIA SOURCE

Please connect the AUX to USB adapter to USB port

press the mode button on the AUX to USB adaptor about 5 seconds gently like the picture shown

After then disconnect and reconnect USB plug and it will work